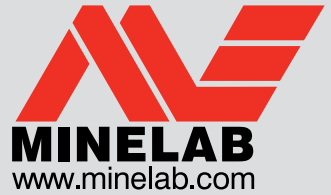


# Field Guide

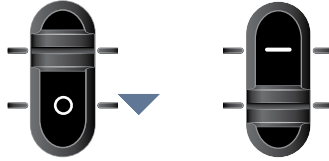
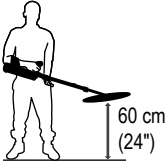
## F3 UXO Detector



### Operation

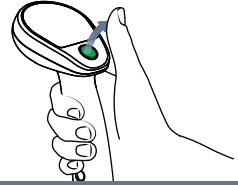
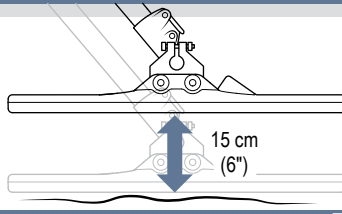
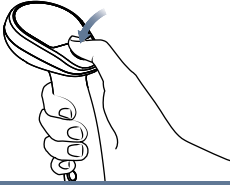
**1.**

Switch On



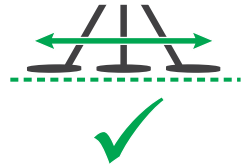
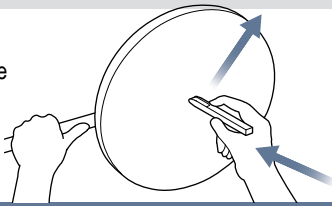
**2.**

Ground  
Balance



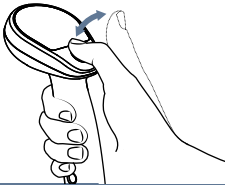
**3.**

Test Piece



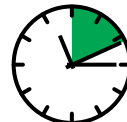
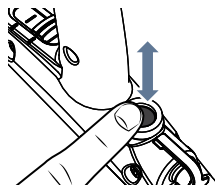
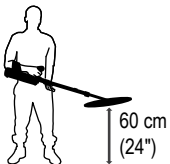
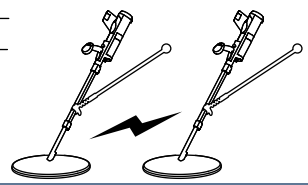
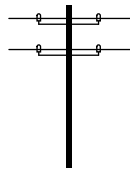
**4.**

Audio Reset

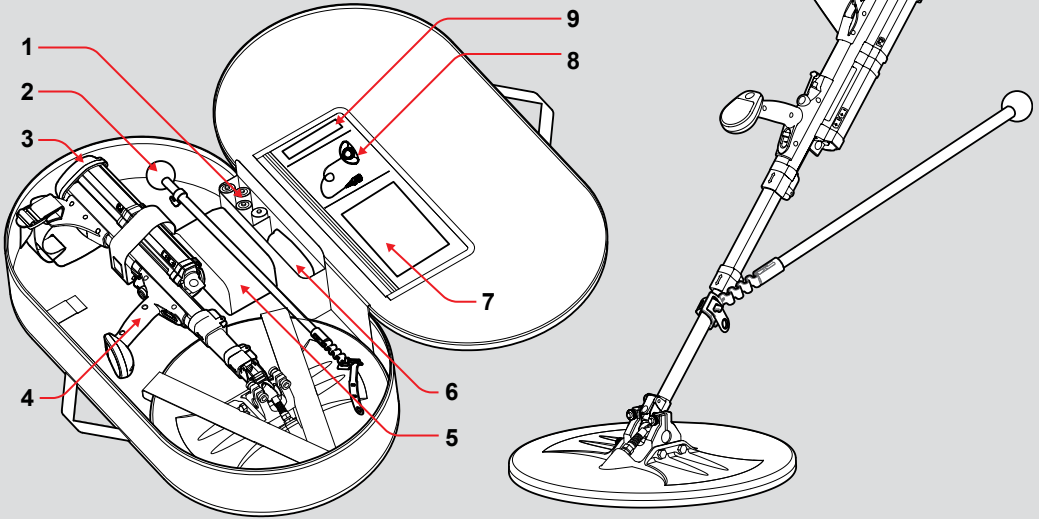


**5.**

Noise Cancel

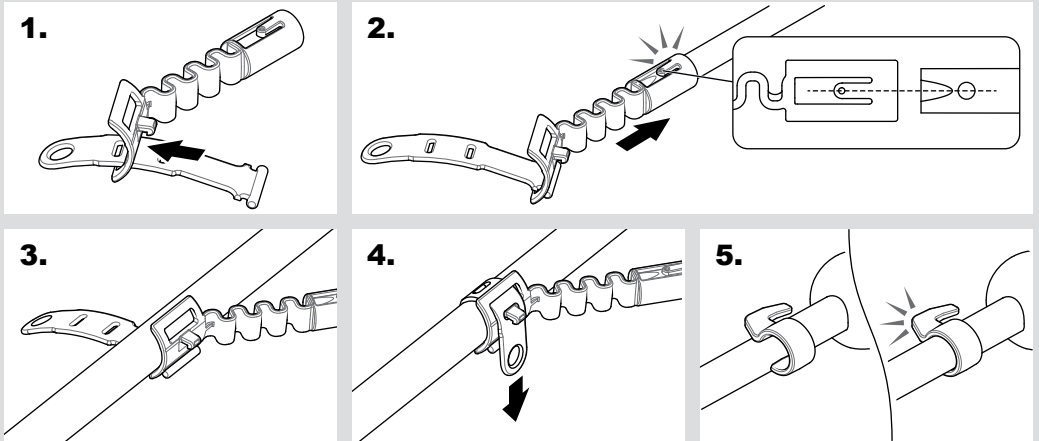


# F3 UXO Configuration



- |                           |  |   |
|---------------------------|--|---|
| 1. Batteries 4 × D Cell   | 5. Battery Pack Bag & Extension Cable (Optional) | 7. Field Guide, Interchange Procedure & Operations Manual |
| 2. Guide Arm              | 6. Red Endcap (Yellow Endcap Optional)           | 8. Earset   |
| 3. Black Endcap (Default) |  | 9. Test Piece   |
| 4. F3 UXO Detector        |  |   |

## Guide Arm Assembly



## F3 Endcap Guide



**Black**  
High Sensitivity  
(Default Endcap)



**Red**  
Reduced Sensitivity



**Yellow**  
Detector Settings Customisable Via PC